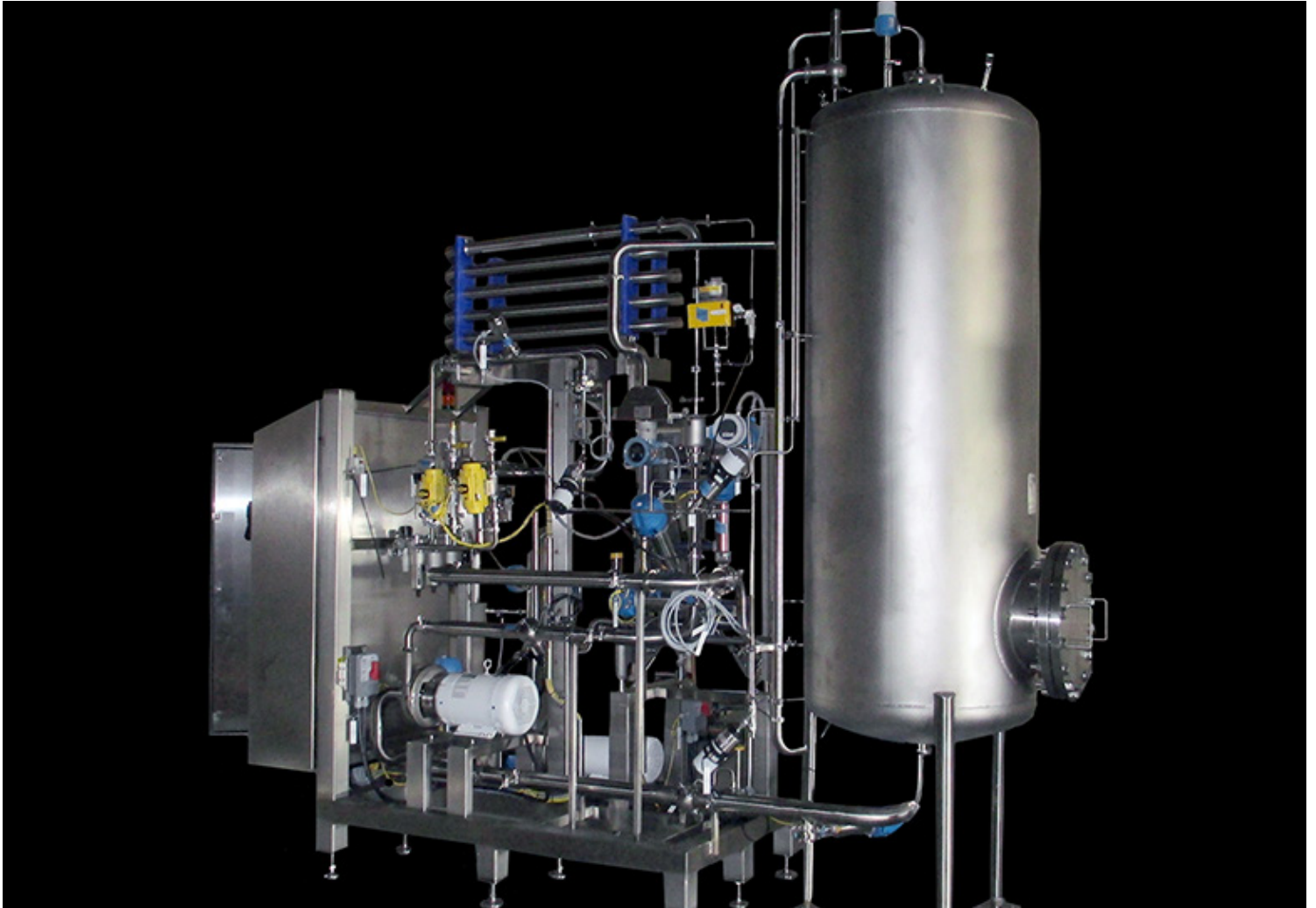




Carbonator



Features

- Skidded carbonation system for accurate in-line carbonation, also available in a non-skidded carbonator
- Exact repeatable carbonation technology
- Integrate with a Blender or Flash Pasteurizer for maximum product flexibility
- Eliminates the inaccuracy of in-tank carbonation and problems associated with reworking tanks to find the correct CO₂ level
- Touch pad capability for setting carbonation levels to suit bottles, canned or kegged products
- Accurate CO₂ injection using gas flow meter, gas modulating valve, unique sparger device, static mixer and CO₂ retention coil
- Handles still product and pre-carbonated product
- Recirculation method allows for reworked product to enter the system to increase batch yields

Carbonator

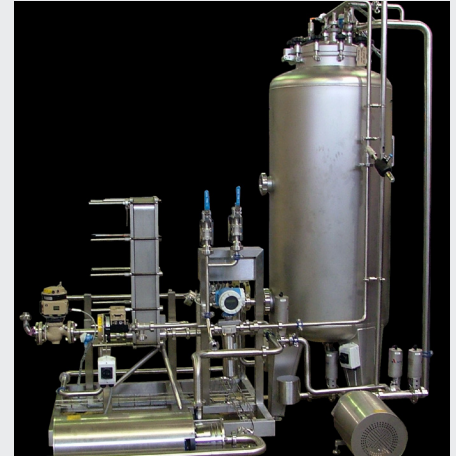
BW Container Systems' Carbonators are used in a wide variety of applications over the full range of beverage sectors. Positioned just prior to the filler, the Carbonator is designed to enable precise control of temperature and pressure, which allows accurate CO₂ addition at a wide range of flow rates. The Carbonator has the capacity to respond to variation in the flow rates while maintaining steady output product CO₂ levels to the filler. Carbonation is the process of dissolving CO₂ in a liquid solution. To carbonate to a specific level, factors such as pressure, temperature, flow rate of product, type of product (ingredients, dissolved sugar, specific gravity) and agitation need to be considered.

The BW Container Systems' Carbonator accommodates all these variables and provides accurate carbonation performance. The Carbonator can be fully integrated with existing production and cleaning processes. With a fully automated operation with status and process alarms, the control temperature and pressure for pinpoint accuracy emphasizes the design.

Main Component Description:

The BW Container Systems' Carbonators consist of a buffer tank with level and pressure sensors (stainless steel pressure rated), heat exchanger (stainless steel plate and frame), Allen Bradley Controller in NEMA 4X stainless panel with touch screen HMI and CO₂ metering equipment which includes a flow meter, control valve, sparger, static mixer and holding coil. The VFD controlled product pumps and product flow meter allow for a wide range of flow rates as well as variation in the flow rate. Utilizing various technologies for accurate CO₂ measurement, BW Container Systems' Carbonator can be rated for Class 1 Div 1 Group D.

Contact our experienced sales teams today for a comprehensive review of your application(s) and to see how our Carbonators can benefit your company.



Carbonator



Carbonator / Blender

For our European office, contact:
Plumtree Farm Industrial Estate,
Bircotes, Doncaster
South Yorkshire DN11 8EW ENGLAND
t. +44 (0) 1302 711056

Ambec CBI-Fleetwood Fleetwood Goldco-Wyard

BW Container Systems

1305 Lakeview Drive
Romeoville, IL 60446 USA

t. +1 (630) 759-6800
bwcontainersystems.com

barrywehmillers
bw
betterworld